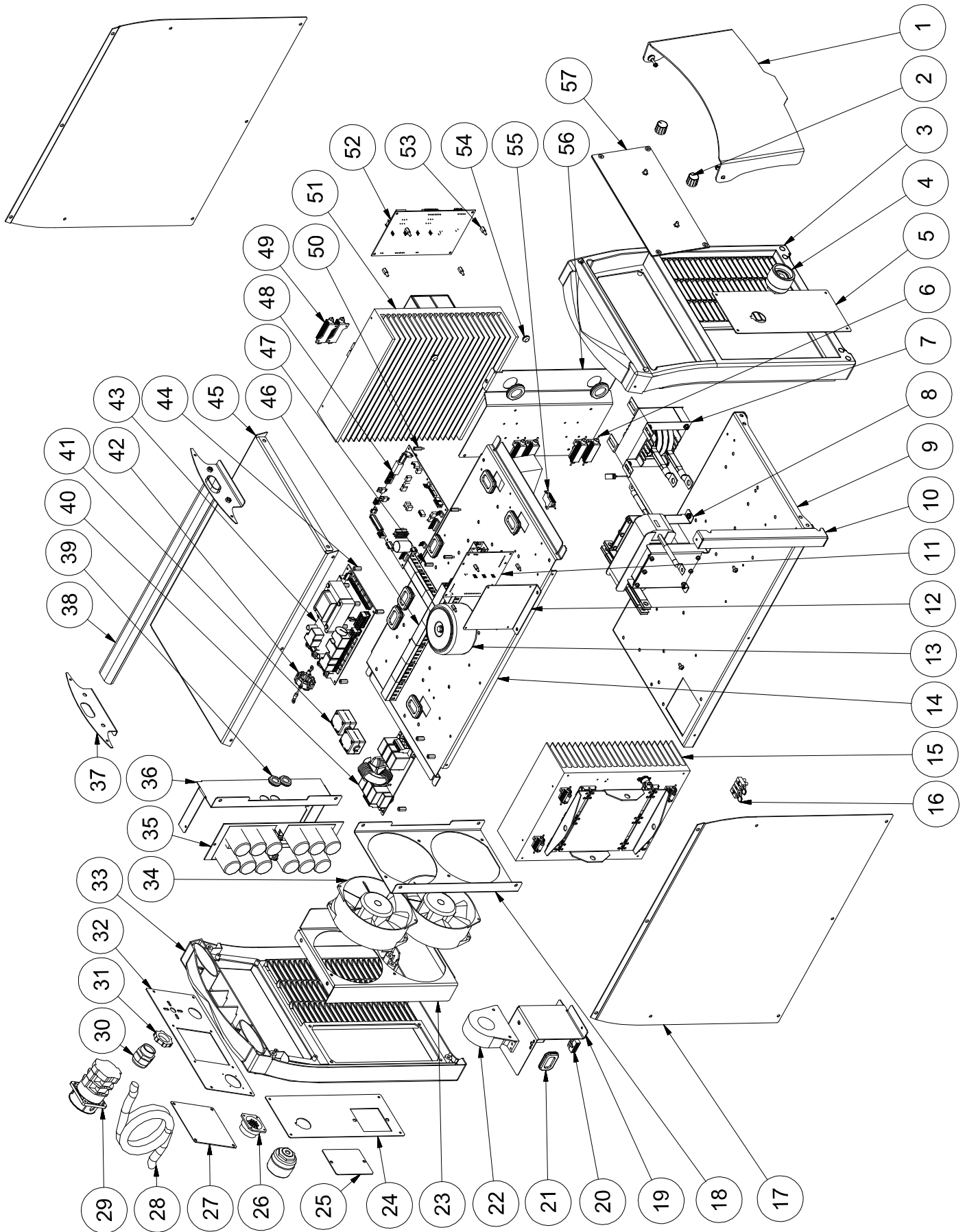


3Ph- 400V ; 50/60 Hz





REPUESTOS. GPS 5000 DR ADVANCED  
PARTS LIST. GPS 5000 DR ADVANCED  
LISTE DES PIÈCES. GPS 5000 DR ADVANCED

REF:  
426.00.200

04/12/19

HR:42600200 V0

2/4

3Ph- 400V ; 50/60 Hz

| N° | REF.     | DESCRIPCION                     | N° | REF.     | DESCRIPCION                   |
|----|----------|---------------------------------|----|----------|-------------------------------|
| 1  | 42312103 | CONJ.TAPA GPS                   | 30 | 49716120 | PRENSAESTOPAS                 |
| 2  | 63112005 | MANDO POTENCIÓMETRO             | 31 | 49716220 | TUERCA PRENSAESTOPAS          |
| 3  | 42313003 | FRENTE ANTERIOR PLÁSTICO        | 32 | 42610063 | PLACA FRENTE POSTERIOR        |
| 4  | 42616035 | CONECTOR HEMBRA 70-95           | 33 | 42313004 | FRENTE POSTERIOR PLÁSTICO     |
| 5  | 42610062 | PLACA FRENTE ANTERIOR           | 34 | 53216023 | VENTILADOR                    |
| 6  | 00550028 | RESISTENCIA 22R/50W             | 35 | 42612034 | PLACA ELECTR.CONDENSADORES    |
| 7  | 42612025 | CONJ.REACTANCIA                 | 36 | 42610081 | SOPORTE CONDENSADORES         |
| 8  | 42612024 | CONJ.TRAFO                      | 37 | 42310029 | SOPORTE CIERRE ASA            |
| 9  | 42610001 | CHASIS GPS                      | 38 | 42312013 | CONJUNTO ASA                  |
| 10 | 42610096 | SOPORTE PANEL CENTRAL           | 39 | 00532067 | PASAMUROS                     |
| 11 | 42612219 | PLACA ELECTRÓNICA CONTROL MOTOR | 40 | 44016092 | FILTRO EMI                    |
| 12 | 42610075 | SOPORTE PLACA CONTROL MOTOR     | 41 | 42616098 | FILTRO EMI ENCAPSULADO        |
| 13 | 00557021 | TRAFO TOROIDAL                  | 42 | 47012098 | FILTRO TIERRA                 |
| 14 | 42610028 | PANEL CENTRAL HORIZONTAL        | 43 | 42612097 | PLACA ELECTR.CONTROL ALIMENT. |
| 15 | 42612023 | MODULO SECUNDARIO               | 44 | 00533019 | SEPARADOR METAL H/H M4-15 mm  |
| 16 | 42612099 | CONJUNTO FILTRO SOLDADURA       | 45 | 42610007 | TAPA ENVOLVENTE GPS DR        |
| 17 | 42300005 | LATERAL FIJO                    | 46 | 00531079 | REGLETA PROTECCION CABLEADO   |
| 18 | 42610012 | SOPORTE VENTILADOR              | 47 | 00533023 | SEPARADOR METAL               |
| 19 | 42610010 | PROTECCION CONEXION             | 48 | 42612216 | PLACA ELECTRONICA DSP         |
| 20 | 42612045 | CONJ.CONEXION                   | 49 | 00550032 | RESISTENCIA 220R/50W          |
| 21 | 43016040 | PASAMUROS                       | 50 | 00533008 | SEPARADOR METAL M-H M3x17     |
| 22 | 00557605 | SONDA HALL 500 A                | 51 | 42612015 | MÓDULO PRIMARIO               |
| 23 | 42610011 | CAMARA TURBO                    | 52 | 47012017 | PLACA ELECTRÓNICA DRIVER      |
| 24 | 42610064 | PLACA TAPA POSTERIOR            | 53 | 00533004 | SEPARADOR METAL M/H M4-10 mm  |
| 25 | 42610564 | TAPA CONEXIÓN REFRIGERACIÓN     | 54 | 00532065 | PASAMUROS                     |
| 26 | 00531221 | CONECTOR BASE PANEL HEMBRA      | 55 | 00550029 | RESISTENCIA 470R/25W          |
| 27 | 42610563 | TAPA CONECTORES OPCIONALES      | 56 | 42610032 | SOPORTE DRIVER-RESIST.SNUBBER |
| 28 | 44112029 | CABLE ENTRADA                   | 57 | 42612091 | CONJ. PLACA FRONTAL-DISPLAY   |
| 29 | 42616085 | INTERRUPTOR                     |    |          |                               |



REPUESTOS. GPS 5000 DR ADVANCED  
PARTS LIST. GPS 5000 DR ADVANCED  
LISTE DES PIÈCES. GPS 5000 DR ADVANCED

REF:  
426.00.200

04/12/19

HR:42600200 V0

3/4

3Ph- 400V ; 50/60 Hz

| N° | REF.     | DESCRIPCION                    | N° | REF.     | DESCRIPCION                       |
|----|----------|--------------------------------|----|----------|-----------------------------------|
| 1  | 42312103 | COVER GPS                      | 30 | 49716120 | STUFFING BOX                      |
| 2  | 63112005 | POTENTIOMETER CONTROL          | 31 | 49716220 | NUT STUFFING BOX                  |
| 3  | 42313003 | PLASTIC FRONT PART             | 32 | 42610063 | PART BOARD                        |
| 4  | 42616035 | FEMALE CONNECTOR               | 33 | 42313004 | REAR PART                         |
| 5  | 42610062 | FRONT PART BOARD               | 34 | 53216023 | FAN                               |
| 6  | 00550028 | RESISTANCE 22R/50W             | 35 | 42612034 | CONDENSERS ELECTRONIC PLATE       |
| 7  | 42612025 | REACTANCE SET                  | 36 | 42610081 | CONDENSERS SUPPORT                |
| 8  | 42612024 | TRANSFORMER                    | 37 | 42310029 | SUPPORT CLOSES HANDLE             |
| 9  | 42610001 | FRAME GPS                      | 38 | 42312013 | HANDLE SET                        |
| 10 | 42610096 | CENTRAL PANEL SUPPORT          | 39 | 00532067 | INSULATING BUSHING                |
| 11 | 42612219 | MOTOR ELECTRONIC CONTROL BOARD | 40 | 44016092 | EMI FILTER                        |
| 12 | 42610075 | MOTOR CONTROL PLATE SUPPORT    | 41 | 42616098 | EMI ENCAPSULATED FILTER           |
| 13 | 00557021 | TOROIDAL TRANSFORMER           | 42 | 47012098 | EARTH FILTER                      |
| 14 | 42610028 | HORIZONTAL MAIN BOARD          | 43 | 42612097 | ELECTRONIC CONTROL BOARD          |
| 15 | 42612023 | SECONDARY MODULE               | 44 | 00533019 | METAL SPACER H/H M4-15 mm         |
| 16 | 42612099 | WELDING FILTER                 | 45 | 42610007 | ENCLOSURE COVER GPS DR            |
| 17 | 42300005 | FIXED SIDE                     | 46 | 00531079 | STRIP PROTECTION RULES            |
| 18 | 42610012 | FAN SUPPORT                    | 47 | 00533023 | METAL SPACER H/H M4-15 mm         |
| 19 | 42610010 | CONNECTION PROTECTION          | 48 | 42612016 | DPS ELECTRONIC BOARD              |
| 20 | 42612045 | CONNECTION SET                 | 49 | 00550032 | RESISTANCE 22R/50W                |
| 21 | 43016040 | BLIND INSULATING BUSHING       | 50 | 00533008 | METAL SPACER M-H M3x17            |
| 22 | 00557605 | HALL CURRENT 500A              | 51 | 42612015 | PRIMARY MODULE                    |
| 23 | 42610011 | TURBO CHAMBER                  | 52 | 47012017 | ELECTRONIC BOARD DRIVER           |
| 24 | 42610064 | COVER BOARD                    | 53 | 00533004 | METAL SPACE M/H M4-10 mm          |
| 25 | 42610564 | CONNECTION COOLING COVER       | 54 | 00532065 | INSULATING BUSHING                |
| 26 | 00531221 | FEMALE BASE PANEL CONNECTOR    | 55 | 00550029 | RESISTANCE 470R/25W               |
| 27 | 42610563 | OPTIONAL CONNECTORS COVER      | 56 | 42610032 | DRIVER-SNUBBER RESISTANCE SUPPORT |
| 28 | 44112029 | INPUT CABLE                    | 57 | 42612091 | FRONT PLATE ASSEMBLY-DISPLAY      |
| 29 | 42616085 | SWITCH                         |    |          |                                   |



REPUESTOS. GPS 5000 DR ADVANCED  
PARTS LIST. GPS 5000 DR ADVANCED  
LISTE DES PIÈCES. GPS 5000 DR ADVANCED

REF:  
426.00.200

04/12/19

HR:42600200 V0

4/4

3Ph- 400V ; 50/60 Hz

| N° | REF.     | DESCRIPCION                               | N° | REF.     | DESCRIPCION                          |
|----|----------|---|----|----------|--------------------------------------|
| 1  | 42312103 | COUVERCLE GPS                             | 30 | 49716120 | PRESSE-ÉTOUPE                        |
| 2  | 63112005 | COMMANDE POTENTIOMÈTRE                    | 31 | 49716220 | ECROU PRESSE-ÉTOUPE                  |
| 3  | 42313003 | PARTIE ANTÉRIEURE PLASTIQUE               | 32 | 42610063 | PLAQUE PARTIE POSTÉRIEURE            |
| 4  | 42616035 | CONNECTEUR FEMELLE                        | 33 | 42313004 | PARTIE POSTÉRIEURE                   |
| 5  | 42610062 | PLAQUE PARTIE ANTÉRIEURE                  | 34 | 53216023 | VENTILATEUR                          |
| 6  | 00550028 | RÉSISTANCE 22R/50W                        | 35 | 42612034 | PLAQUE ÉLECTRONIQUE DE CONDENSATEURS |
| 7  | 42612025 | RÉACTANCE                                 | 36 | 42610081 | SUPPORT CONDENSATEURS                |
| 8  | 42612024 | TRANSFORMATEUR                            | 37 | 42310029 | SUPPORT FERMETURE POIGNÉE            |
| 9  | 42610001 | CHÂSSIS GPS                               | 38 | 42312013 | POIGNÉE(COMPLÈTE)                    |
| 10 | 42610096 | SUPPORT DE PANNEAU CENTRAL                | 39 | 00532067 | BORNE PASSE-FIL                      |
| 11 | 42612219 | PLAQUE ÉLECTRONIQUE DE CONTRÔLE DE MOTEUR | 40 | 44016092 | FILTRE EMI 3PH-35 A                  |
| 12 | 42610075 | SUPPORT DE PLAQUE DE COMMANDE DE MOTEUR   | 41 | 42616098 | FILTRE ENCAPSULÉ EMI                 |
| 13 | 00557021 | TRANSFORMATEUR TOROIDAL                   | 42 | 47012098 | FILTRE DE TERRE                      |
| 14 | 42610028 | PANNEAU CENTRAL HORIZONTAL                | 43 | 42612097 | PLAQUE ÉLECTRONIQUE DE CONTRÔLE      |
| 15 | 42612023 | MODULE SECONDAIRE                         | 44 | 00533019 | SÉPARATEUR DE METAUX H/H M4-15 mm    |
| 16 | 42612099 | FILTRE DE SOUDAGE                         | 45 | 42610007 | COVERTURE ENVELOPPANT GPS DR         |
| 17 | 42300005 | LATÉRAL FIXE                              | 46 | 00531079 | RÉGLETTE DE BORNES                   |
| 18 | 42610012 | SUPPORT VENTILATEUR                       | 47 | 00533023 | SÉPARATEUR DE METAUX                 |
| 19 | 42610010 | PROTECTION CONEXION                       | 48 | 42612216 | PLAQUE DE CONTRÔLE DSP               |
| 20 | 42612045 | SET DE CONNEXION                          | 49 | 00550032 | RÉSISTANCE 22R/50W                   |
| 21 | 43016040 | BORNE PASSE-FIL AVEUGLE                   | 50 | 00533008 | SÉPARATEUR DE METAUX H/H M4-15 mm    |
| 22 | 00557605 | SONDE HALL 500A                           | 51 | 42612015 | MODULE PRIMARIE                      |
| 23 | 42610011 | TURBO CHAMBRE                             | 52 | 47012017 | PLAQUE ÉLECTRONIQUE DRIVER           |
| 24 | 42610064 | PLAQUE COVERTURE POSTÉRIEURE              | 53 | 00533004 | SÉPARATEUR DE METAUX M/H M4-10 mm    |
| 25 | 42610564 | COVERTURE CONNECT.REFROIDISSEMENT         | 54 | 00532065 | BORNE PASSE-FIL                      |
| 26 | 00531221 | CONNECTEUR BASE PANNEAU FEMELLE           | 55 | 00550029 | RÉSISTANCE 470R/25W                  |
| 27 | 42610563 | COUVERCLE DE CONNECTEURS OPTIONNELS       | 56 | 42610032 | DRIVER-SNUBBER RESISTANCE SUPPORT    |
| 28 | 44112029 | INPUT CABLE                               | 57 | 42612091 | ASSEMBLAGE DE LA PLAQUE AVANT        |
| 29 | 42616085 | INTERRUPTEUR                              |    |          |                                      |